

EIB100 User Manual

Dollia Technologies

Section 1 – Product Overview

EIB100 provides an AI-powered companionship experience through voice interaction.

Users can chat with EIB100 by voice, while the Dollia App allows text chatting, memory management, and chat history review. Bluetooth pairing and Wi-Fi configuration are required to enable interactive voice features and data synchronization.

Voice interaction is available only through the EIB100 device. The Dollia App itself does not support voice functions.

Section 2 – Warnings and Precautions

- This product is intended for adults aged 18 and above only.
- Before use, ensure that both the EIB100 device and the companion doll are functioning properly.
- Keep out of reach of children to prevent accidental swallowing of small parts or batteries.
- The device contains a lithium battery. Do not disassemble, crush, puncture, or throw into fire.
- Do not immerse the device in water or any other liquid. Avoid using acetone or volatile cleaners.
- Do not use or charge in high-temperature, high-humidity, or flammable environments.
- Perform Bluetooth and Wi-Fi setup in a safe and stable environment.
- Avoid pulling or bending the charging cable excessively during charging.
- Comply with local laws and regulations; do not use this product for any illegal purposes.
- If the device malfunctions, is damaged, or fails to operate normally, stop using it immediately and contact official customer support.

Section 3 – Using the Device

3.1 Product Structure and Components

Name	Description
EIB100	Built-in microphone, speaker, and Bluetooth module for voice interaction.
Charging Cable	Dedicated USB cable for recharging EIB100.
App	Mobile application for text chat, role management, history viewing, and Bluetooth/Wi-Fi setup.

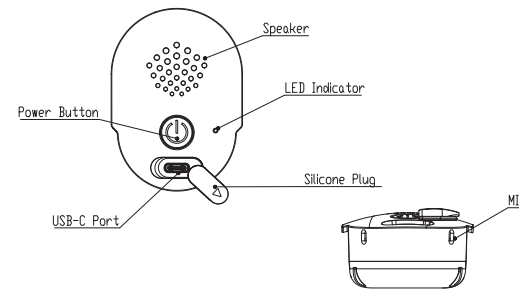


Figure 3-1. EIB100 Structural Diagram

3.2 Package Contents

- EIB100 x1
- Charging Cable x1
- User Manual x1

3.3 Unboxing Preparation

Before unboxing, carefully inspect the packaging for damage. If any damage is found, contact the courier or official customer service immediately.

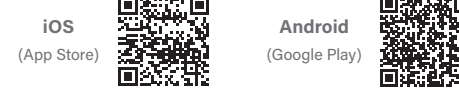
If packaging is intact, open the box properly and take out all components. Verify all items against the packing list and check for any physical damage.

Note: Follow local waste disposal regulations and keep packaging materials away from children.

3.4 First-Time Use

Download the Dollia App

- App Name: Dollia
- Scan the QR code below to download the Dollia App.



Power Button Operations:

- Power On: Long press the power button for 3 seconds.
- Power Off: Long press the power button for 3 seconds.
- Wake from Standby: Short press once, or gently shake the device to wake.
- If the LED indicator is unresponsive, check the battery or restart the device.

Section 4 – Bluetooth and Wi-Fi Setup

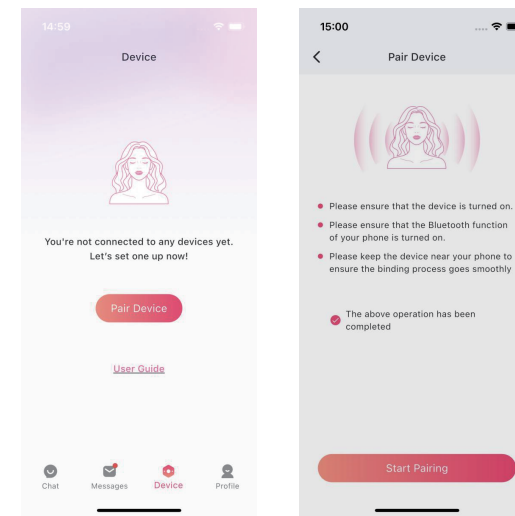
4.1 Bluetooth Pairing Process

Objective:

To complete the initial Bluetooth pairing between EIB100 and your smartphone for device control and Wi-Fi setup.

Step 1: Open the Dollia App

Turn on EIB100 and launch the Dollia App. Tap "Pair Device" to begin Bluetooth pairing.



Step 1: Open the Dollia App

Step 2: Prepare for Connection

Step 2: Prepare for Connection

Ensure Bluetooth and network access are enabled on your phone.

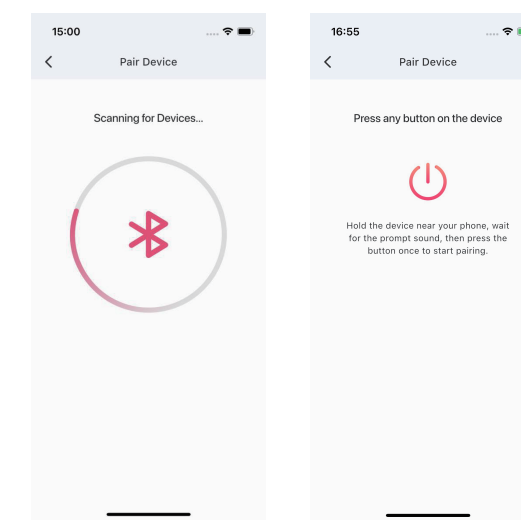
Stay close to the device for stable signal transmission.

Android users must enable Location Services.

After confirming terms, tap "Start Pairing".

Step 3: Search for Devices

The app will automatically detect available devices. If EIB100 is not found, check that it is powered on and not already connected to another phone.



Step 3: Search for Devices

Step 4: Confirm Pairing

Step 4: Confirm Pairing

When the app detects EIB100, the device will issue a voice prompt to confirm pairing.

Press the EIB100 power button once to confirm.

Step 5: Pairing Complete

Once paired successfully, the app will display a short animation of your purchased doll model and automatically proceed to Wi-Fi setup.

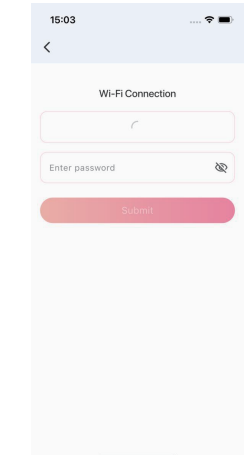
4.2 Wi-Fi Network Configuration

Objective:

To connect EIB100 to a local Wi-Fi network for voice interaction features. Offline use disables all voice functions.

Step 1: Enter Wi-Fi Setup

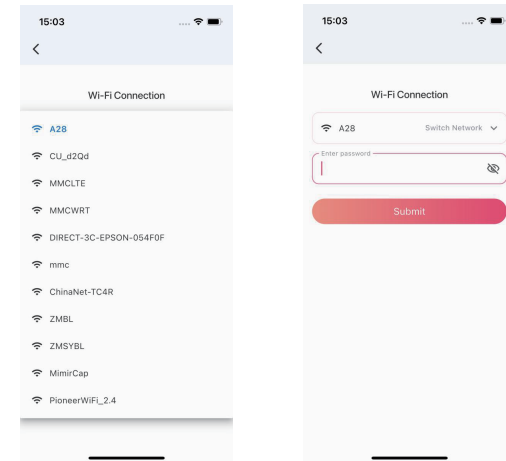
After Bluetooth pairing, the app automatically opens the Wi-Fi setup page. Ensure EIB100 is within router signal range.



Step 1: Enter Wi-Fi Setup

Step 2: Select Wi-Fi Network

Choose a Wi-Fi SSID from the list shown.



Step 2: Select Wi-Fi Network

Step 3: Enter Password and Connect

Step 3: Enter Password and Connect

Enter your Wi-Fi password and tap "Submit."

Wait until the app displays "Wi-Fi connected successfully."

Notes:

- If connection fails, check the Wi-Fi signal strength or re-enter the password.
- For repeated failures, try a stronger network or check router configuration.

4.3 Auto-Reconnect Mechanism

Once EIB100 has been paired before, it automatically reconnects when you reopen the app.

If the network environment changes, please reconfigure Wi-Fi via the app settings.

4.4 Important Notes

- Always use the **Dollia App** for pairing and setup.
- Avoid manual Bluetooth pairing from the system menu, as it may prevent activation.
- Keep the device charged during setup to avoid power interruptions.
- EIB100 supports Bluetooth 5.0 Low Energy (LE). Ensure your phone's Bluetooth version supports this feature for full functionality. Recommended phone OS: Android 8.0+ or iOS 13+, which typically include Bluetooth 5.0 support.
- The device supports IEEE 802.11b/g/n standards on the 2.4 GHz band, with a maximum rate of 150 Mbps. It supports WPA/WPA2/WPA3 security protocols. Note: This device does not support 5 GHz Wi-Fi networks and cannot search or connect to networks with "5G" suffixes. Ensure the network you are connecting to is 2.4 GHz.

Section 5 – App Registration and Login

EIB100 offers two app access modes:

- **Registered Mode** — After registration, the system creates a personal account. When switching to another smartphone or device, users can log in with the same account to retain historical data.
- **Guest Mode** — Allows limited browsing of the app but does not support EIB100 activation, AI chat, or cloud synchronization.

Section 6 – Voice and Text Interaction

- When EIB100 is powered on, registered users can communicate with it via voice.
- Within the Dollia App, users can also send and receive text messages, manage AI role memories, and review chat history.
- Text and voice chat logs automatically synchronize to the cloud for registered accounts.

Section 7 – Data Synchronization and Storage

- Voice data is processed only for real-time recognition and not stored on servers.
- Chat histories are stored solely for AI memory enhancement and never shared with third parties.
- If the device goes offline or runs low on battery, memory data will be automatically synced once the network reconnects.

Section 8 – Charging the EIB100

Charging Method:

- Connect the USB charging cable to both the EIB100 and a power adapter.
- A full charge takes approximately 1.5 hours and supports about 3 hours of continuous voice interaction.
- **Low Battery Warnings:**
 - When the battery level drops below 20%, the device will issue a low-battery alert.
 - When below 5%, it will automatically shut down and cannot be awakened until recharged.

Section 9 – Viewing Chat History and Role Management

- On the main app page, users can chat with AI character via text and view conversation history.
- In "Memory Management," users can clear an AI role's stored memories.
- Chat records can be deleted, multi-selected, or favorited for later review.

Section 10 – Support and Feedback

- The "Profile" section of the app includes a user feedback form for submitting suggestions or technical issues.
- For help, users can check the in-app User Guide or contact official customer support directly.

Section 11 – Maintenance

11.1 Cleaning and Disinfection

- Use a soft, dry, or slightly damp cloth to clean the surface of EIB100.
- Do not immerse the device in water or use chemical solvents.

11.2 Software Updates

- The Dollia App provides periodic updates for performance and bug fixes.
- Update promptly when notified.

11.3 OTA Firmware Updates

- Firmware updates can be performed through the app when a new version is available.
- Keep Bluetooth and Wi-Fi connected and ensure the battery is above 50% during the update.

11.4 Battery Maintenance

- If the device is unused for extended periods, recharge it every two months to prevent over-discharge.

Section 12 – Troubleshooting

Issue	Possible Cause	Solution
App cannot find EIB100	Bluetooth disabled	Enable Bluetooth on the phone
	Android location permission off	Grant location access
EIB100 won't power on	Battery depleted	Recharge and retry
	Device damage	Contact official support
Cannot start a chat	Wi-Fi not connected	Reconfigure or check Wi-Fi status
App cannot configure Wi-Fi	Weak Wi-Fi signal	Reduce distance or switch to stronger Wi-Fi
	No Wi-Fi list displayed	Tap "Reconfigure" to refresh list

Section 13 – Specifications

Item	Parameter
Battery	Rechargeable Li-Polymer
Charging Time	Approximately 1.5 hours
Bluetooth	BLE 5.0 (Low Energy)
Wi-Fi Connection	IEEE 802.11 b/g/n, 2.4 GHz
Usage Duration	Approx. 3 hours (70% volume)
Mobile App Compatibility	iOS 13.0+ / Android 8.0+

Section 14 – Operating Environment

Condition	Range
Operating Temperature	5 °C – 40 °C
Storage Temperature	-10 °C – 55 °C
Relative Humidity	15% – 80% (non-condensing)

Section 15 – Compliance and CE Certification

This product complies with all relevant EU regulations and has been CE certified.

The CE mark ensures the product meets EU safety and environmental standards and can be sold and used within the European Economic Area (EEA). **Applicable Directives:**

- **2014/30/EU – EMC Directive**
Ensures the device operates properly within its electromagnetic environment and does not cause harmful interference.
- **2014/35/EU – LVD Directive**
Guarantees electrical safety under standard voltage conditions.
- **2011/65/EU – RoHS Directive**
Restricts hazardous substances such as lead, mercury, cadmium, and hexavalent chromium.
- **2014/53/EU – RED Directive**
Defines standards for radio frequency performance, health, and electrical safety of wireless devices.

Important:

- Follow this manual for correct installation and operation.
- Do not disassemble, alter, or modify the product — doing so may void CE compliance.
- In case of malfunction or safety risks, contact an authorized dealer or official service provider.

End of Document

© 2025 Dollia Technologies | Version 1.0